

# Chandler Trusses

## TIMBER SPECIFICATIONS

Glulam: GL18 Vic Ash Hardwood  
Top & Bottom Chord: 250x65mm GL18  
Rafters: 220x65mm GL18  
(Walkway rafters)  
Coating: Quantec coat

## WE WORKED WITH

Builder: Nicholas Copeland Builders  
Architect: Ralph Wheeler & Associates  
Engineer: Vistek Engineers

## THIS PROJECT WAS LOCATED IN

Queensland

## THIS PROJECT TOOK PLACE IN

2019

## WE USED THESE PRODUCTS

[Vic Ash H3 Hardwood](#)

[Bolted Roof Trusses](#)

[GLT Pergolas](#)



## GLULAM TIMBER TRUSSES AND A MAGNIFICENT ENTRANCE PERGOLA

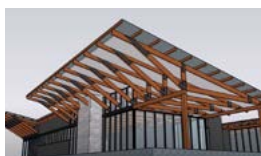
A single storey home located in coastal Queensland now boasts 22 feature trusses that looks sharp and unified. Vicbeam supplied trusses prefabricated, assembled, and delivered on-site with an additional 17 rafters installed as for an entrance pergola structure. Together, they form a residential home with inspiring timber architecture and merges other natural build materials together.

The Trusses are made to GL18 Vic Ash H3 Hardwood specification with each member connected with black powdered steel plates and installed with endcaps for moisture protection. The exposed trusses contrast wonderfully with the Vic Ash texture and colour, darken by additional H3 treatment. It complements the earthy tones of the home's use of materials such as stone, clay, and the charcoal stained cladding seen all over the residence.

Impressively, these exposed timber trusses continue inside the residential where they fill the high ceilings with demanding timber texture that works harmoniously with a fireplace. Together, they bring a magnificent tone of warmth to an open space kitchen and living areas.

Large glazing windows allows natural light to fill the room and the hallway, which leads pass three bedrooms and into another spacious living room with a timber decking. The trusses are aligned together on top throughout the hallway, bedrooms and into the spacious living room, where they end at the front timber decking. On the outside, each truss span creates a wing-like structure to the home and garage, adding to the spaciousness the façade offers.

Vicbeam is proud to be part of a beautifully finished home with inspiring timber architecture.



[Chandler Trusses Residential  
3D Model Design](#)

View all of our projects at [www.vicbeam.com.au](http://www.vicbeam.com.au)

Factory 4, 899 Mountain Hwy, Bayswater Victoria 3153 | Phone: 1300 788 705 • Fax: (03) 9923 6791