



# Garage Bolted Trusses

## TRUSS SPECIFICATIONS

Glulam: GL18S Vic Ash Hardwood  
Truss Span: 7.2m  
Garage length: 8.0m  
Top & Bottom Chord: 200 x 80 GL18  
Webs & Post: 200 x 80 GL18  
Hip Beams: 200 x 80 GL18  
Ridge Beam: 200 x 80 GL18  
Rafters: 200 x 80 GL18  
Coating: Cutek Extreme - Walnut Tint  
Installation time: 8 hours

## WE WORKED WITH

Builder: Tim Gibney and associates

## THIS PROJECT WAS LOCATED IN

Wonga Park

## THIS PROJECT TOOK PLACE IN

2017

## WE USED THESE PRODUCTS

[GL18 Vic Ash Hardwood](#)  
[Bolted Roof Trusses](#)

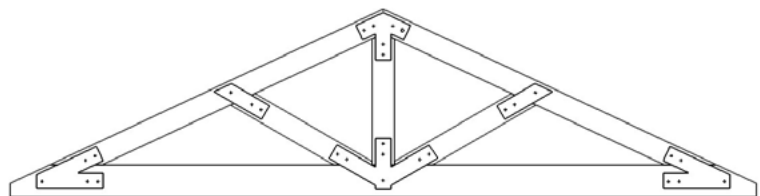


## VICBEAM DESIGN AND CONSTRUCT

Vicbeam were contracted to design and construct a bolted truss roof comprising of two king post trusses, a truncated truss and a ridge beam with supporting rafters.

It was requested that the steel plates be rusted. Using corten steel and a special liquid formula, we sped up the rusting process over 5 days to achieve the desired look. All members were cut to size, drilled and assembled on-site by Vicbeam

It is not often that Vicbeam do installations but this was an exception.



View all of our projects at [www.vicbeam.com.au](http://www.vicbeam.com.au)

Factory 4, 899 Mountain Hwy, Bayswater Victoria 3153 | Phone: 1300 788 705 • Fax: (03) 9923 6791