



The Wharf Port Fairy Waterfront

TRUSS SPECIFICATIONS

Glulam: GL10 White Cypress
Truss Length: 11.4 meters
Bottom Chord: 210 x 110 GL10
Top Chord: 210 x 110 GL10
Posts: 210 x 42 (doubled)
Coating: Dulux Intergrain

WE WORKED WITH

Architect: Baade Harbour Australia
Engineer: The CSE Group
Builder: Fairbrother

THIS PROJECT WAS LOCATED IN

Port Fairy

THIS PROJECT TOOK PLACE IN

2017

WE USED THESE PRODUCTS

[GL10 White Cypress Glulam](#)
[Bolted Roof Trusses](#)
[Curves](#)

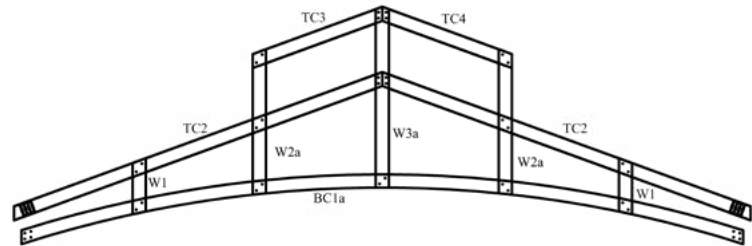


CURVED ARCHITECTURAL BOLTED TRUSSES

In the idyllic seaside town of Port Fairy, their local wharf has been transformed with a new single-storey building which incorporates a restaurant, cafe, and fish & chip shop.

Baade Harbour Australia (BHA) Architects chose to feature-rich Glulam White Cypress that utilises a unique curved bottom chord which seemingly stretches from one end to the other. Each of the King Trusses were made to be different to one another. A challenging task that made this project unique from the rest.

The final outcome was an inspiring single-storey building with 13 bolted King trusses impressively featuring from inside and out of the building.



View all of our projects at www.vicbeam.com.au

Factory 4, 899 Mountain Hwy, Bayswater Victoria 3153 | Phone: 1300 788 705 • Fax: (03) 9923 6791